

FTDI Series Driver Installation Manual

I. Driver operation guide

Take win10 64-bit operating system as an example

Step 1: Open the folder and select the "windows" folder. As shown in the figure:

Windows CE	2023/12/1 15:26
windows	2024/1/20 12:11
MAC	2023/12/1 15:29
Linux	2023/12/1 15:26
Android_Java_D2xx_2.09	2023/12/1 15:26

Step 2: Double-click to open the "windows,8,10" folder.

Windows_Win8_Win10	2024/1/20 12:11
Windows_Win11	2024/1/20 12:11
Windows_XP_Win7	2024/1/20 12:11
x64	2023/12/1 15:26
x86	2023/12/1 15:26
CDM212364_Setup.exe	2021/7/12 13:11

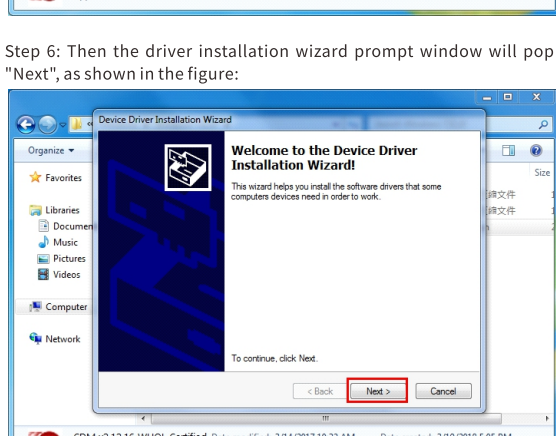
Step 3: Double-click to open the CDM21228_Setup.exe file.

CDM v2.12.28 WHQL Certified_X64.zip	2021/4/1 10:02
CDM v2.12.28 WHQL Certified_X86.zip	2021/4/1 10:02
CDM21228_Setup.exe	2017/9/19 17:04
System Support Instructions.txt	2021/4/1 10:30

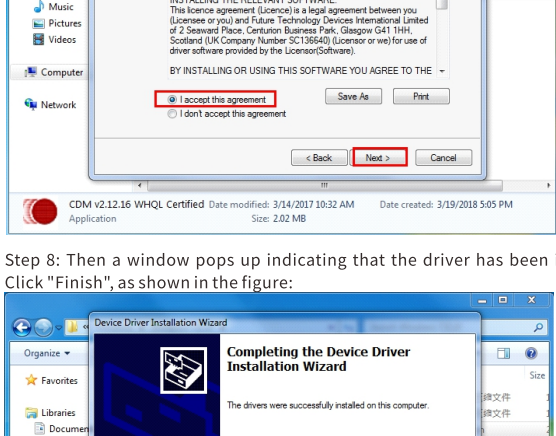
Step 4: Open the pop-up installation project, double-click "Application", as shown in the figure:



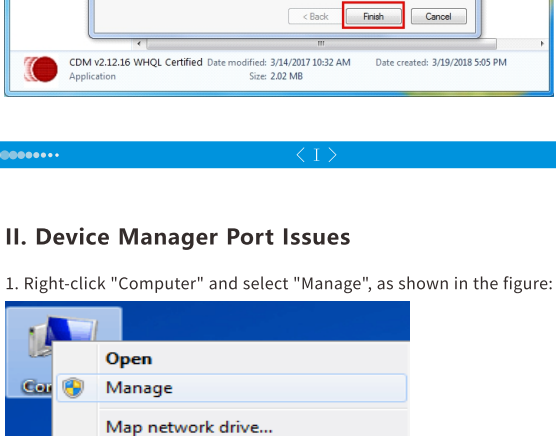
Step 5: The chip company name information pops up, click "Extract" as shown in the figure:



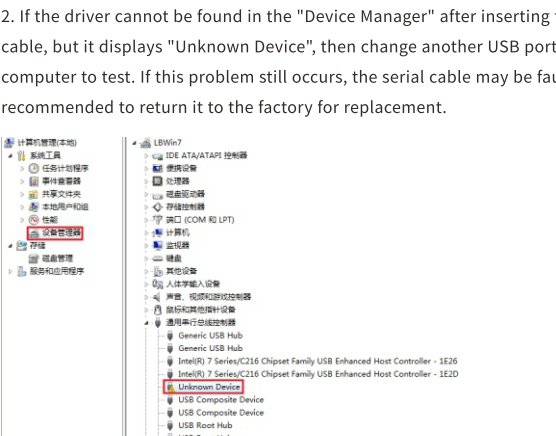
Step 6: Then the driver installation wizard prompt window will pop up, click "Next", as shown in the figure:



Step 7: Select "I accept this agreement" and click "Next", as shown in the figure:

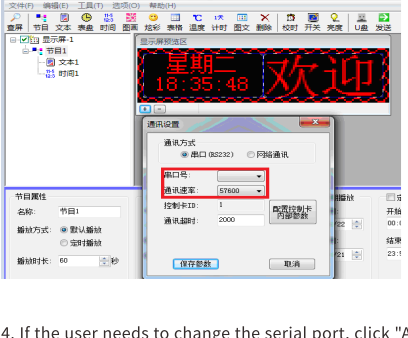


Step 8: Then a window pops up indicating that the driver has been installed. Click "Finish", as shown in the figure:

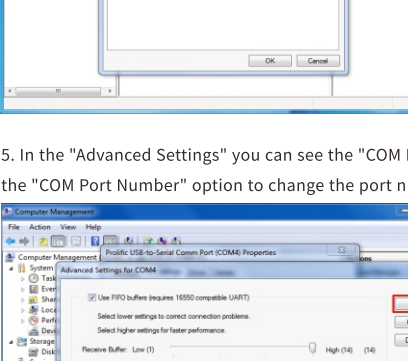


II. Device Manager Port Issues

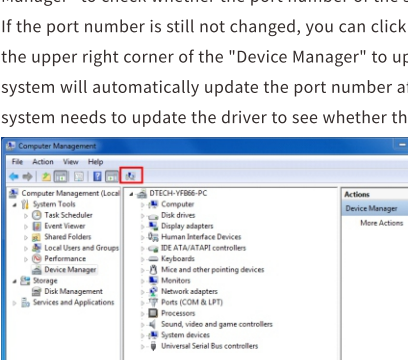
1. Right-click "Computer" and select "Manage", as shown in the figure:



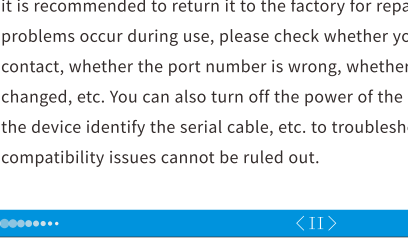
2. If the driver cannot be found in the "Device Manager" after inserting the serial cable, but it displays "Unknown Device", then change another USB port on the computer to test. If this problem still occurs, the serial cable may be faulty. It is recommended to return it to the factory for replacement.



3. When you see the device manager recognize the COM port number, you may not be able to connect to the communication device. The following figure is an application software for a certain LED display screen. You can set the port in the software to change the COM port number to be consistent with the COM port in the device manager, as shown in the figure:



4. If the user needs to change the serial port, click "Advanced Settings" in "Port Settings", as shown in the figure:



5. In the "Advanced Settings" you can see the "COM Port Number" setting. Click the "COM Port Number" option to change the port number of the serial line.

6. After setting the port number of the serial line, you can return to the "Device Manager" to check whether the port number of the serial line has been changed. If the port number is still not changed, you can click the Update Driver icon in the upper right corner of the "Device Manager" to update it (generally, the Win7 system will automatically update the port number after setting it, while the XP system needs to update the driver to see whether the port number has changed).

7. So far, the installation and use of the serial cable have been introduced. If the serial cable has installation problems, or there is an "exclamation mark" in front of the COM port, you can test it on other computers. If the same problem occurs, it is recommended to return it to the factory for repair. If communication problems occur during use, please check whether your connectors are in good contact, whether the port number is wrong, whether the baud rate has been changed, etc. You can also turn off the power of the device and restart it, or let the device identify the serial cable, etc. to troubleshoot the problem, but compatibility issues cannot be ruled out.